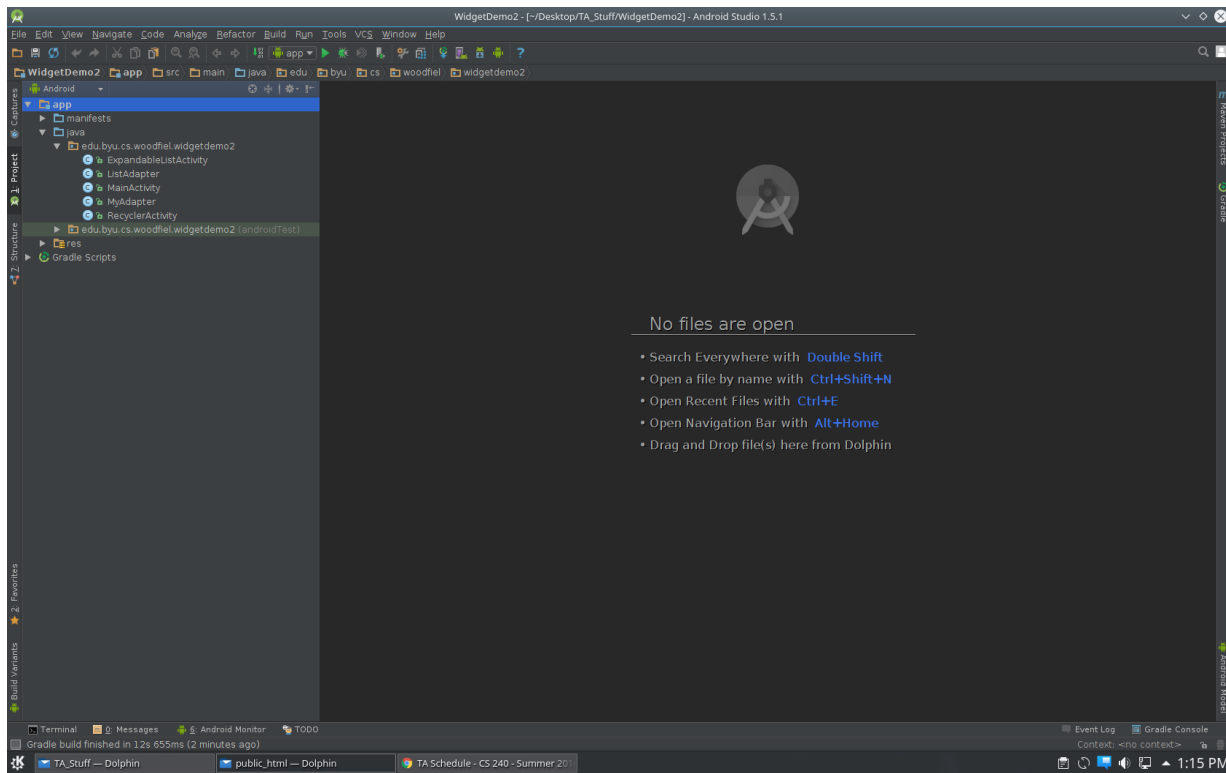
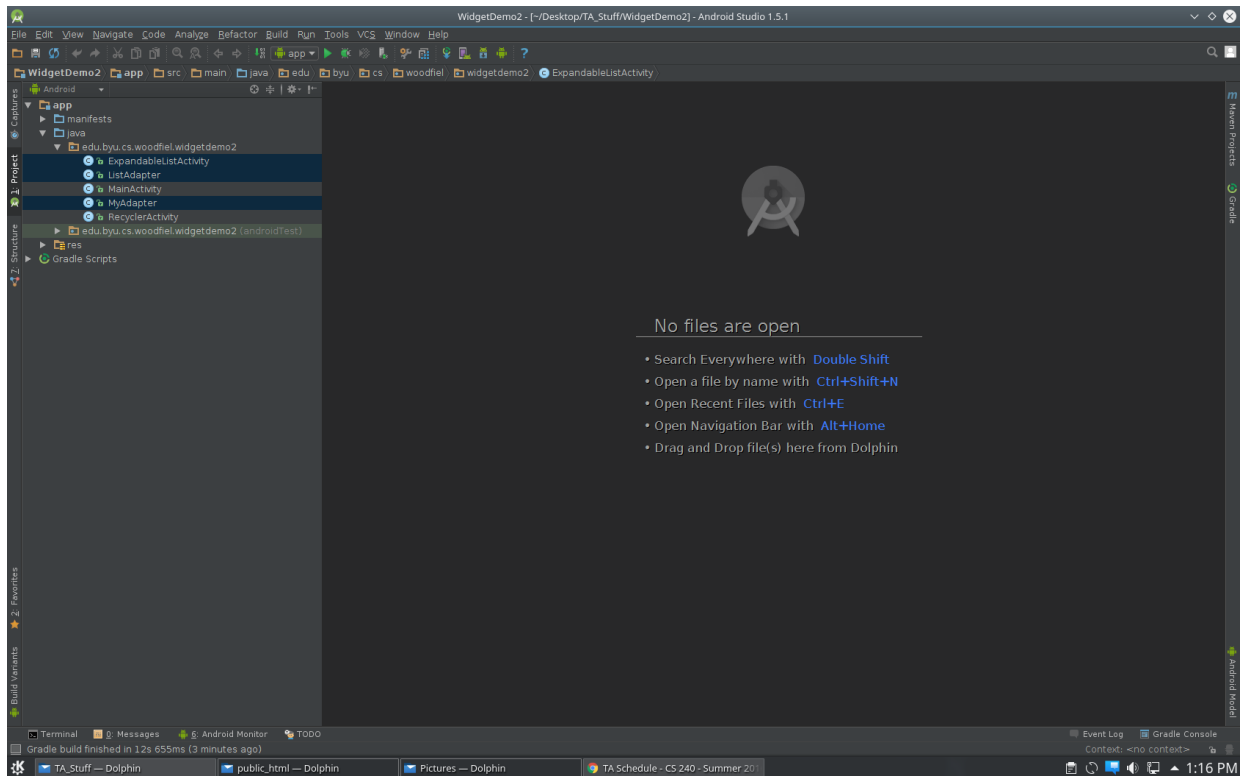


Java Doc Tutorial

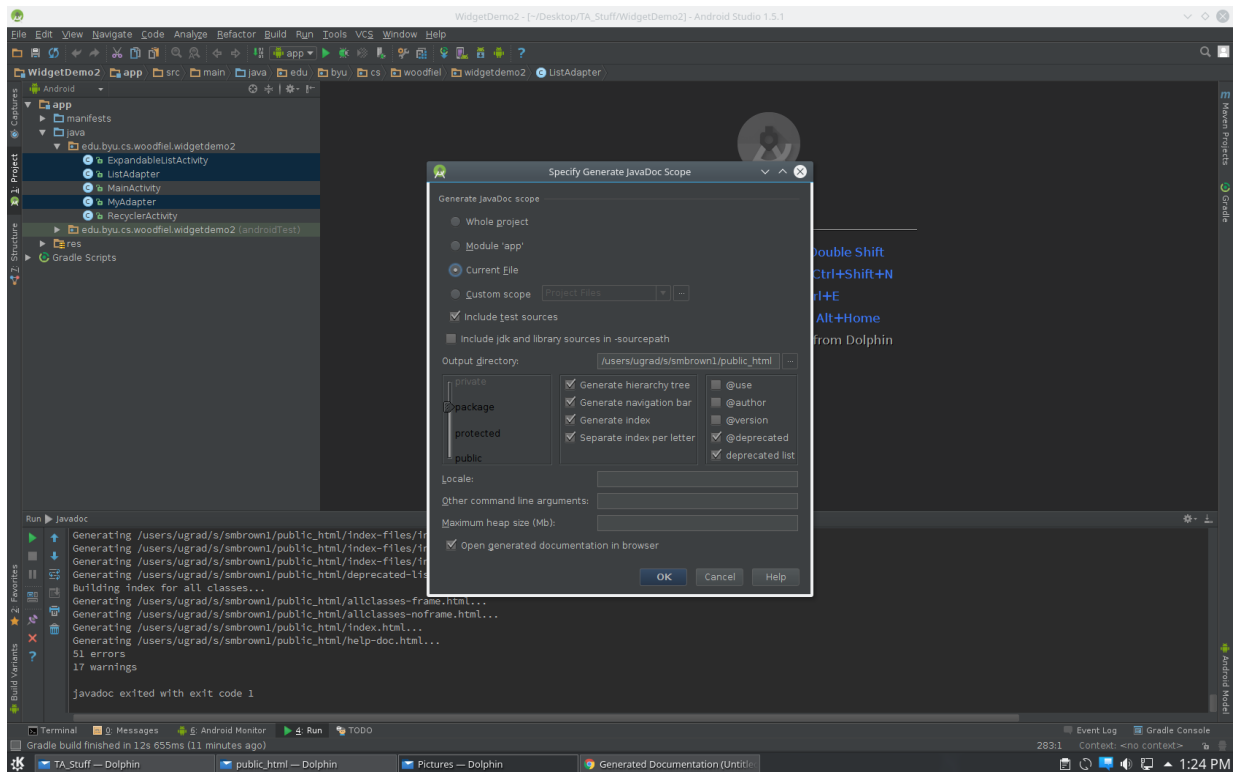
For this tutorial we will be using the widget demo given in chapter 18 of the lecture slides.



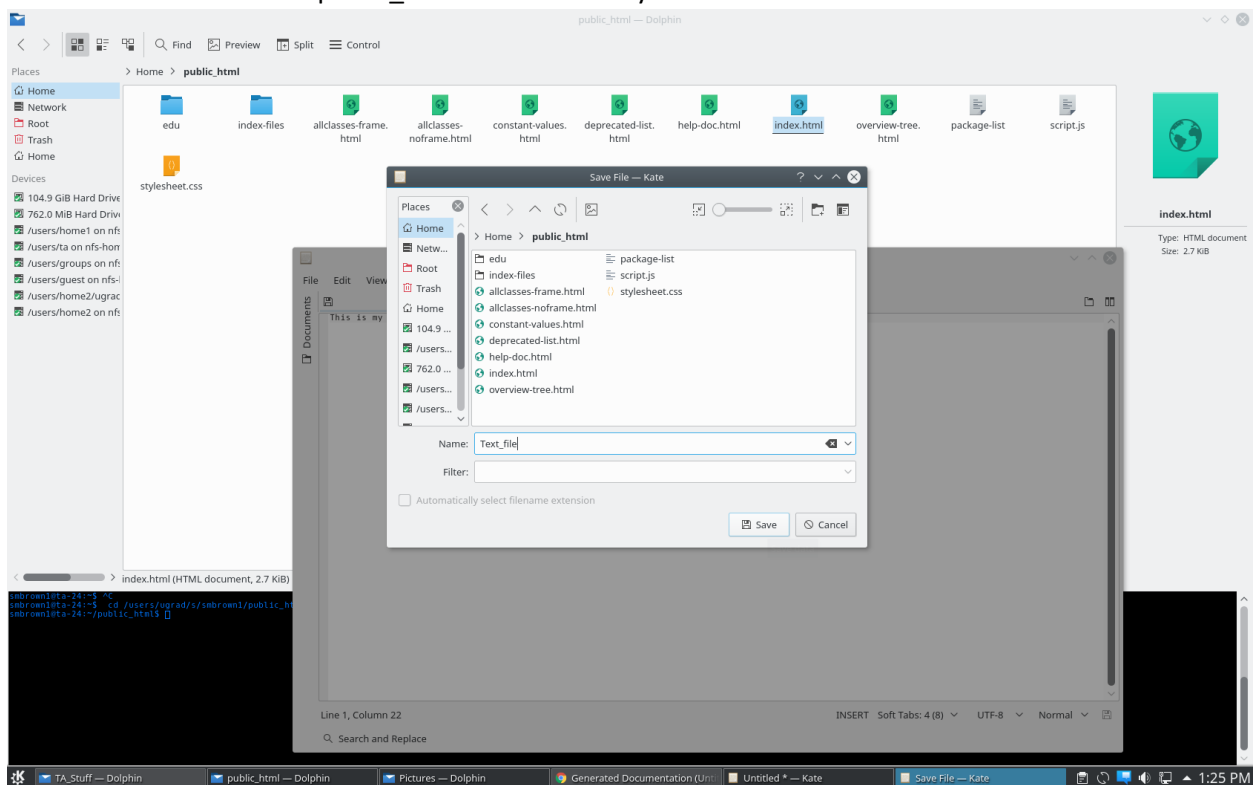
First use ctrl-click to select the classes you wish to include in the java doc. It is recommended that for super asteroids you only select those files that you have created.



Then go to tools -> generate java doc. Select current file under generate java doc scope. Then in the output directory find and select the public_html. Then move the slider from protected to package and select ok.

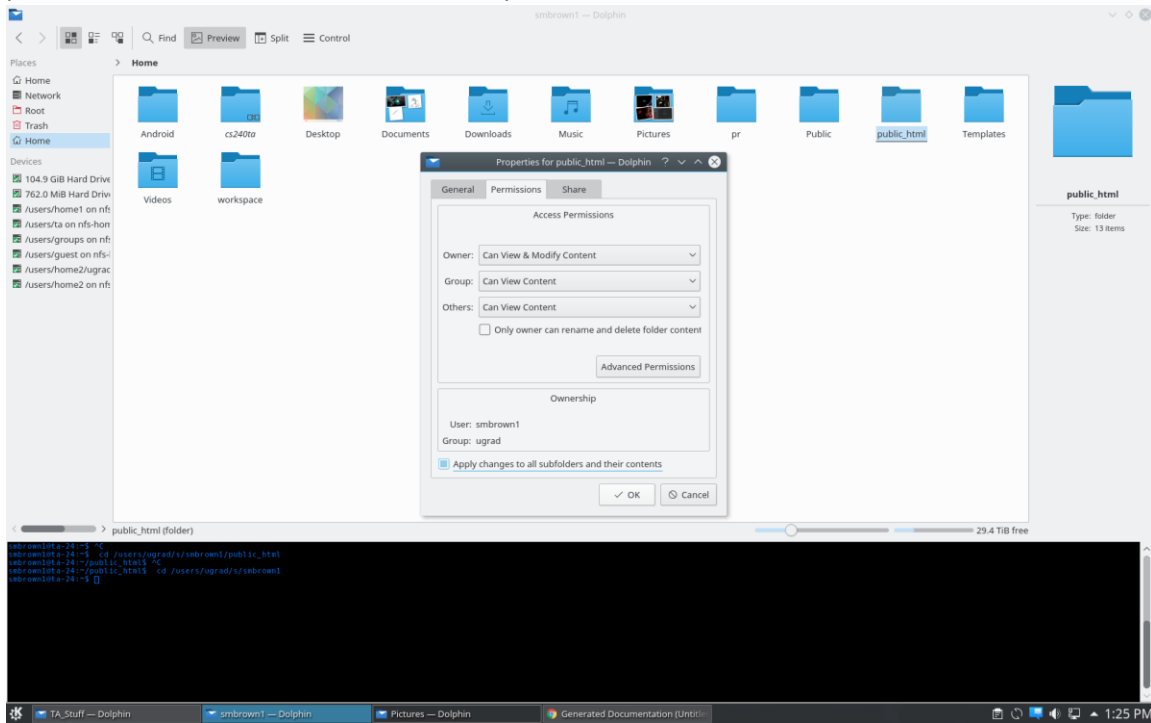


Next add a text file to the public_html. This will hold your create statements.

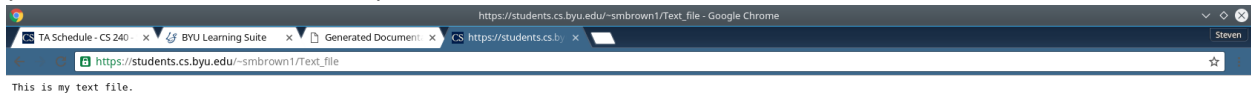


Before others can view the files in your public_html you need to change the permissions. Right-click on the public_html and select properties. Then go to the permissions tab and be sure that others have

permission to read files. Then select the option to allow this to filter down to sub-files.



To get to get to the text file type `students.cs.byu.edu/~yourNetId/fileName` in the browser. Be sure that you can access this from a computer other than the lab machines.



For the java doc use students.cs.byu.edu/~yourNetId/index.html

The screenshot shows a web browser window with the following elements:

- Browser Tabs:** TA Schedule - CS 240, BYU Learning Suite, Generated Document, CS edu.byu.cs.woodfiel, edu.byu.cs.woodfiel.widgetdemo2 - Google Chrome.
- Address Bar:** https://students.cs.byu.edu/~smbrown1/index.html
- Page Header:** PACKAGE CLASS TREE DEPRECATED INDEX HELP; PREV PACKAGE NEXT PACKAGE FRAMES NO FRAMES
- Section Header:** Package edu.byu.cs.woodfiel.widgetdemo2
- Class Summary:** A table with two columns: Class and Description.
- Table Content:**

Class	Description
ListAdapter	Created by Scott on 3/23/2016.
- Page Footer:** PACKAGE CLASS TREE DEPRECATED INDEX HELP; PREV PACKAGE NEXT PACKAGE FRAMES NO FRAMES
- Taskbar:** TA_Staff - Dolphin, public_html - Dolphin, Pictures - Dolphin, edu.byu.cs.woodfiel.widgetdemo2, 1:27 PM